

RESTLOO[®]

RESTROOM CUBICLE PARTITION



TOTAL RESTROOM SOLUTION

[IS -2046 CERTIFIED PRODUCT]

RESTROOM CUBICLE PARTITIONS

WASHROOM ROOM PARTITIONS

CHANGING ROOM PARTITIONS

RESTROOM PARTITIONS HARDWARE & SECTIONS

URINAL & PRIVACY PARTITIONS

HPL COMPACT BOARD

INTERIOR & EXTERIOR WALL CLADDINGS





COMPANY SUMMERY

RESTLOO is provider of Toilet Partitions and Bathroom Partitions all over the country.

Welcome to Restloo, your trusted partner for high-quality HPL board partitions. With a commitment to excellence and a passion for design, we've been transforming spaces since our inception in 2017.

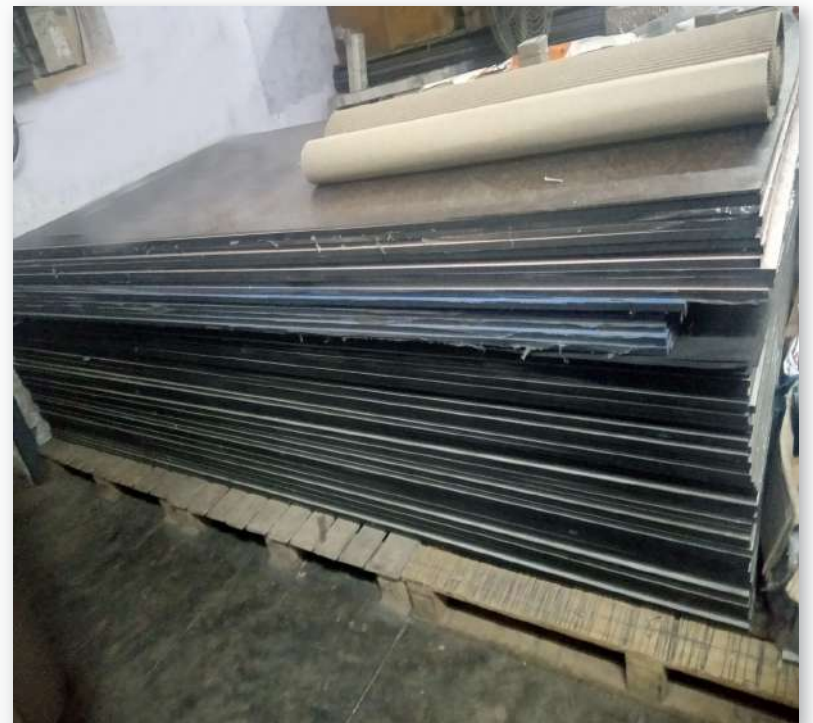
At Restloo, we understand that the right partitions can make a world of difference in any environment. Whether you're looking to create private workspaces in a bustling office, enhance privacy in healthcare facilities, or add aesthetic appeal to your interiors, our HPL board partitions are the perfect solution.

we are an employee-owned firm pursuing a tailored design process that values everyone's input. we provide a free design consultancy service to architects, interior designers and turnkey contractors. Our specification team assists with design and selection of suitable product, finishing sheduled preparation and with tender documentation for all standard and custom design projects.

WAREHOUSE



Restloo Warehouse serves as a crucial link in the supply chain, acting as a distribution center that efficiently moves goods to end customers. It plays a vital role in reducing lead times, enhancing customer satisfaction, and optimizing the overall efficiency of the supply chain.



WHY CHOOSE US?



Dedicated Team

We are proud that we have strong team members who are able to do any task. Our team members have too much experience to work smartly and provide their best results.



100% Client Orientation

We improve our clients operational processes and capacity. However, our work is clearly incomplete without good results. This is what commitment means to us and what we put into practice.



Superior Customer Service

We are always there for our customers. We give them peace of mind. They know they can count on us and our staff.

CEO MESSAGE

“ Offer the highest quality to customers is my prime directive ”



Mr. Ginish Sonawane
Founder & CEO

Our Mission

We exhibit a strong will to win in the marketplace and in every aspect of our business.

Our Vision

To provide superior quality design and overall feel will leave visitors with an impression to be a positive and lasting impression of your impeccable standards.

Our Strategy

Our strategy is to strengthen our position as a leading brand company by providing and improve our service approach for new and existing customers.

CERTIFICATES & AWARDS



[IS -2046 CERTIFIED PRODUCT]

---- OUR CLIENTELE ----





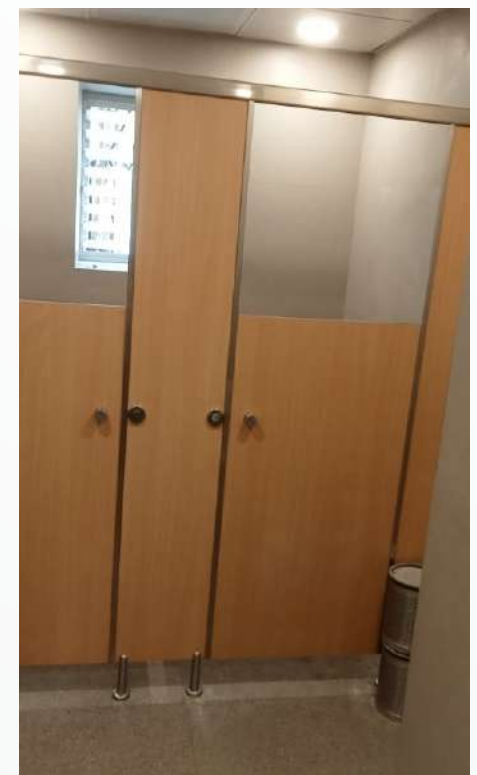
AND MANY MORE....

SOME OF OUR COMPLETED PROJECTS

Awfis prestige tech park mercury, Bangalore



Poddar school, Mumbai



Gaimukh Choupati, Thane, Mumbai



Cessna business park, Bangalore



Elpro International School, Pune



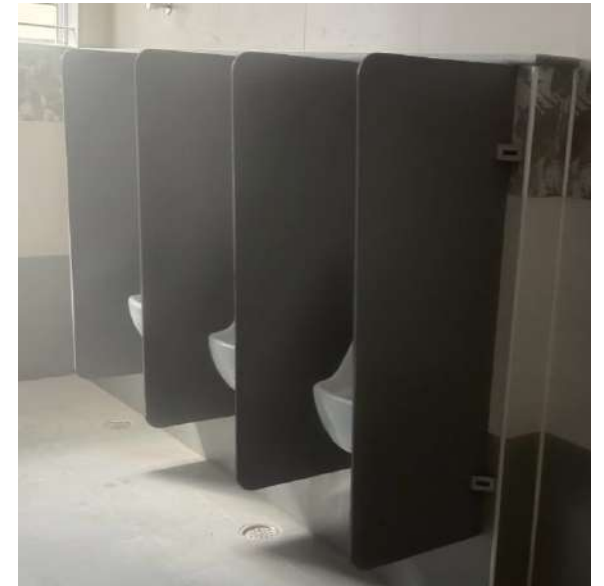
Maruti vidya kendra , Tumkur



NDA PROJECTS,
Government first grade college , Belgaum, Karnataka



Little flower pu college, Bangalore



Bangalore School Project



PRODUCTS



HPL COMPACT BOARD



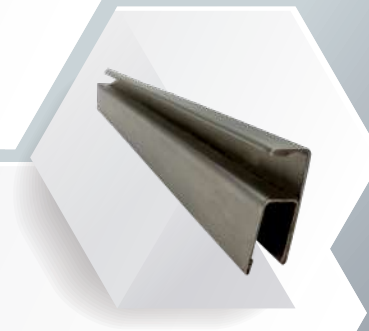
TOILET CUBICLE PARTITIONS



URINAL PARTITIONS



HARDWARE

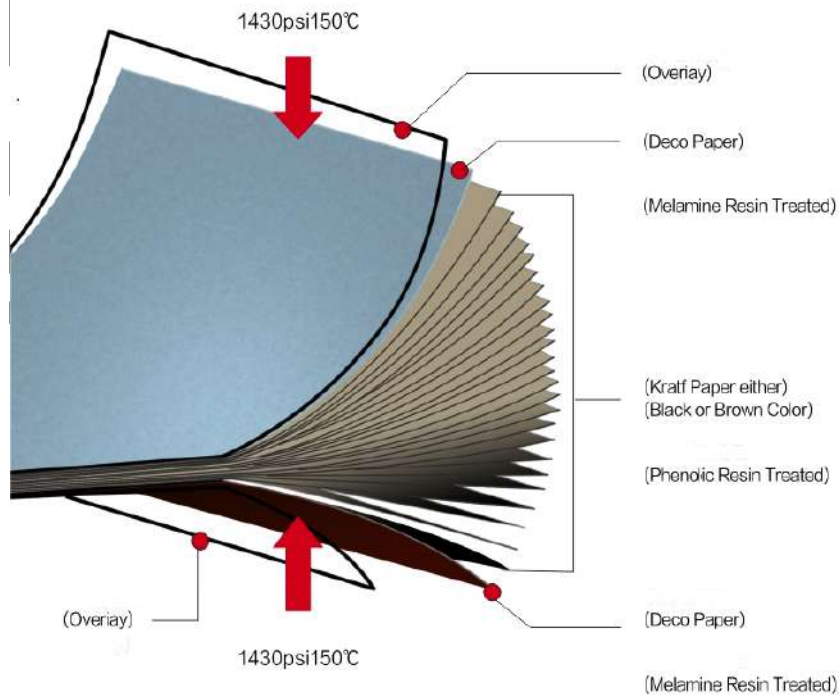


SECTIONS

HPL COMPACT BOARD

[IS -2046 CERTIFIED PRODUCT]

Specification



The compact board comprises of cellulose fibrous material (generally paper). The core is made up of layers of cellulose fibers impregnated with thermosetting Phenolic Resin and the decorative design paper on both sides impregnated with special melamine resin is manufactured under the combined application of heat (1550⁰ c) and high pressure (specific pressure: 9 MPa/90 Bar) in a multidaylight press in which resin polycondensation takes place to give the product that extra performance through & through- strength, durability and toughness.



**HPL Compact Board available sizes
in 6ft. X 12ft. and 6ft. X 14ft.**

Interior Grade-Thickness 3mm to 25 mm sizes in 6ft. X 12ft. & 6ft. X 14ft.
Exterior grade- Thickness 6mm sizes in 8X4ft. & 4.25X10ft.

Technical Specifications for Standard Decorative Compact Laminates

"Restloo" - Shakuntal Interior, An ISO 9001, 14001 & 45001 Certified Company				Technical specifications FOR TYPE CGS STANDARD DECORATIVE COMPACT LAMINATES					
S. NO.	PROPERTIES	UNIT	TEST METHOD AS PER IS - 2046 / DIN EN 438 Part 2&3: 2005	9.0 MM		12.0 MM		18.0 MM	
				Specified value as per IS - 2046 / BSEN 438-4:2005	"Restloo" VALUES	Specified value as per IS - 2046 / BSEN 438-4: 2005	"Restloo" VALUES	Specified value as per IS - 2046 / BSEN 438-4: 2005	"Restloo" VALUES
	CLASSIFICATION		IS - 2046 / EN 438-4						
1a	Length	mm	IS - 2046 / EN 438-2 - 6	+10/-00 mm	Complies	+10/-00 mm	Complies	+10/-00 mm	Complies
1b	Width	mm		+10/-00 mm	Complies	+10/-00 mm	Complies	+10/-00 mm	Complies
2	Thickness	mm	IS - 2046 / EN 438-2 - 5	9.0 mm : ± 0.5 mm	9.0 ± 0.40	12.0 mm : ± 0.6 mm	12.0 ± 0.40	18.0 mm : ± 0.7 mm	18.0 ± 0.45
3	Resistance to Surface Wear	Rev.	IS - 2046 / EN 438-2 - 10	350 (min.)	400	350 (min.)	400	350 (min.)	400
4	Resistance to Scratching	N	IS - 2046 / EN 438-2 - 25	2.0 (min.)	2.5	2.0 (min.)	2.5	2.0 (min.)	2.5
5	Resistance to Impact by Large Diameter Ball								
	a) Drop Height	cm	IS - 2046 / EN 438-2 - 21	1800	2000	1800	2100	1800	2200
	b) Diameter of Indentation	mm	Non Standard	10 (max)	4	10 (max)	4	10 (max)	4
6	Resistance to Cracking	Rating	IS - 2046 / EN 438-2 - 24	Not worse than 4	5	Not worse than 4	5	Not worse than 4	5
7	Resistance to Dry Heat at 180° C	Rating	IS - 2046 / EN 438-2 - 16	Not worse than 4	5	Not worse than 4	5	Not worse than 4	5
8	Resistance to Water vapour	Rating	IS - 2046 / EN 438-2 - 14	Not worse than 4	4	Not worse than 4	4	Not worse than 4	4
9	Resistance to Immersion in Boiling Water								
	a) Mass Increase	%	IS - 2046 / EN 438-2 - 12	2.0 (max.)	0.48	2.0 (max.)	0.44	2.0 (max.)	0.26
	b) Thickness	%	IS - 2046 / EN 438-2 - 12	2.0 (max.)	0.67	2.0 (max.)	0.61	2.0 (max.)	0.58
	c) Appearance	Rating	IS - 2046 / EN 438-2 - 12	Not worse than 4	5	Not worse than 4	5	Not worse than 4	5
10	Resistance to Cigarette Burns	Rating	IS - 2046 / EN 438-2 - 30	Not worse than 3	4	Not worse than 3	4	Not worse than 3	4
11	Resistance to staining Group 1 & 2	Rating	IS - 2046 / EN 438-2 - 26	5	5	5	5	5	5
	Group 3	Rating	IS - 2046 / EN 438-2 - 26	4	4	4	4	4	4
12	Flatness of panel		IS - 2046 / EN 438-2 - 9	5 mm/M	5 mm/ M	3 mm/M	3 mm/ M	3 mm/M	3 mm/ M
13	Resistance to Colour Change								
	In Xerox Arc Light (Contrast Grey scale)	Rating	IS - 2046 / EN 438-2 - 27	4 to 5	5	4 to 5	5	4 to 5	5
14	Dimensional Stability at Elevated Temperature								
	a) Longitudinal	%	IS - 2046 / EN 438-2 - 17	0.30 (max.)	0.08	0.30 (max.)	0.07	0.30 (max.)	0.08
	b) Transverse	%	IS - 2046 / EN 438-2 - 17	0.60 (max)	0.20	0.60 (max)	0.15	0.60 (max)	0.14
15	Tensile Strength	Mpa	IS - 2046 / EN ISO 527-2:1996	60 (min.)	80 - 90	60 (min.)	80 - 90	60 (min.)	80 - 90
16	Flexural Strength	Mpa	IS - 2046 / EN ISO 178:2003	80 (min.)	100 - 120	80 (min.)	100 - 120	80 (min.)	100 - 120
17	Flexural Modulus	Mpa	IS - 2046 / EN ISO 178:2003	9000 (min.)	11000 - 12000	9000 (min.)	11000 - 12000	9000 (min.)	11000 - 12000
18	Density	g/cm ³	IS - 2046 / EN ISO 1183 -1:2004	1.35	1.4 ± 0.05	1.35	1.4 ± 0.05	1.35	1.4 ± 0.05



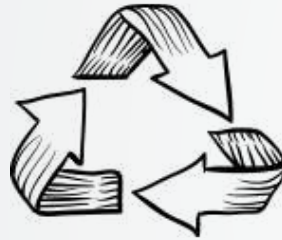
KEY FEATURES

The quality features we install for our toilet partitions systems included:

Easy to install



Easy to maintain



Impact Resistant

Moisure Resistant



Chemical Resistant

Hygiene & safe

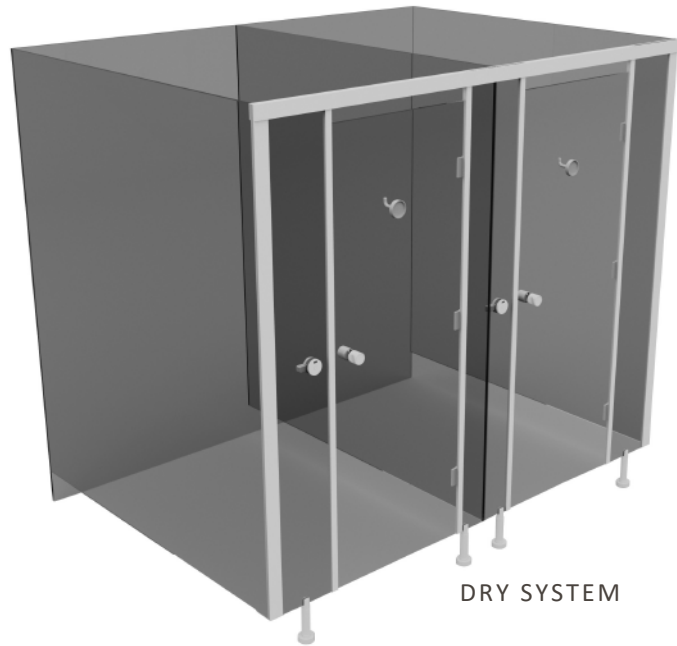


Fire resistant

Enviorment friendly



WET VS DRY AREA RESTROOMS COMPARISON

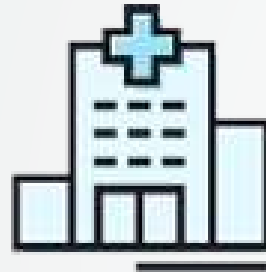


	WET SYSTEM	DRY SYSTEM
Cleaning and Maintenance	Difficult to clean as dirt and stains settle down due to porous surfaces.	Easy to clean Dry restrooms tend to be more sustainable and environmentally friendly, requiring less water and lower maintenance efforts.
Ventilation	Limited or no natural ventilation mechanisms.	Proper air ventilation access provided in all model designs
Space Utilisation	Loss of space due to usage of 6" x 6" thick walls resulting in a loss of 3 sq.ft. of area per partition.	Economy of space as HPL partition panels are only 12mm thick.
Building Load	Load of building becomes high due to brick work.	Economy of load as partitioning systems reduce the load on building.
Quick on-site installation	Requires lot of time and manpower	Quick installation due to pre-fabricated system hence less time

***SECTORS* WHERE TO USE OUR PRODUCT IN TOILET CUBICLE PROJECTS**



Shopping Mall



Hospitals



Restaurants



School



Airports



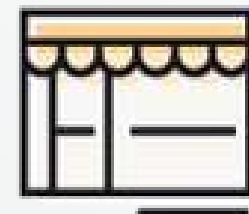
Hotels



Banks



PMC PROJECTS



Retail shops

TOILET CUBICLE PARTITIONS

Be The Tailored and The Artist



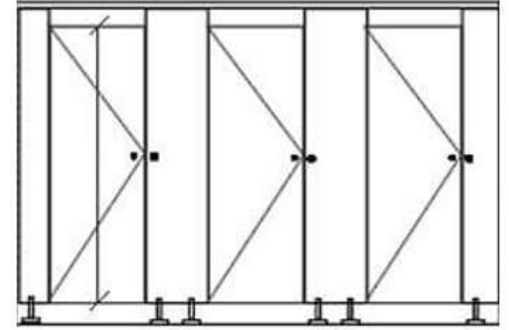
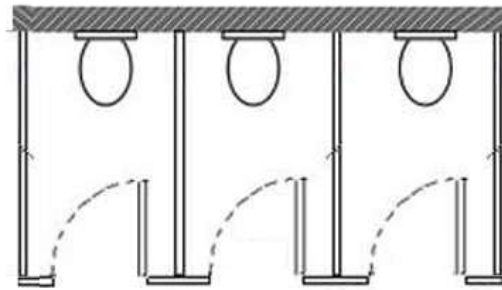
We are manufacturers of Toilet Cubicles partitions. It Made In Indian Product with 100% HPL. Total Solution For Restroom Cubicle Partitions, Compact board, Modular toilet Partitions.

CONSTRUCTION OVERVIEW – CUBICLES

TYPES OF SITE CONDITIONS FOR INSTALLATION.

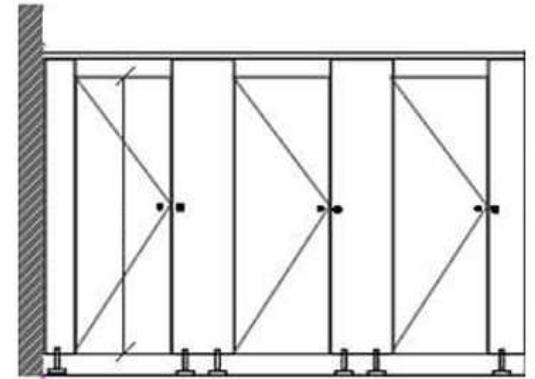
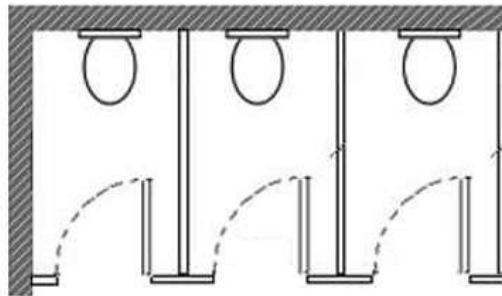
ONE SIDE CLOSED

When an installation site doesn't have wall on either side.



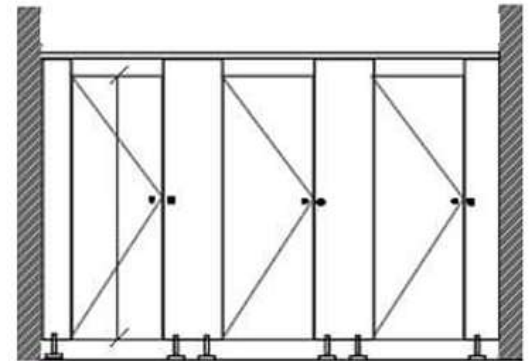
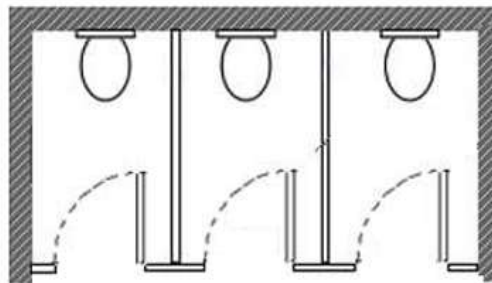
TWO SIDE CLOSED

When an installation site has wall on one side and open from the other side.



THREE SIDE CLOSED

When an installation site has walls on both sides.



PEARL



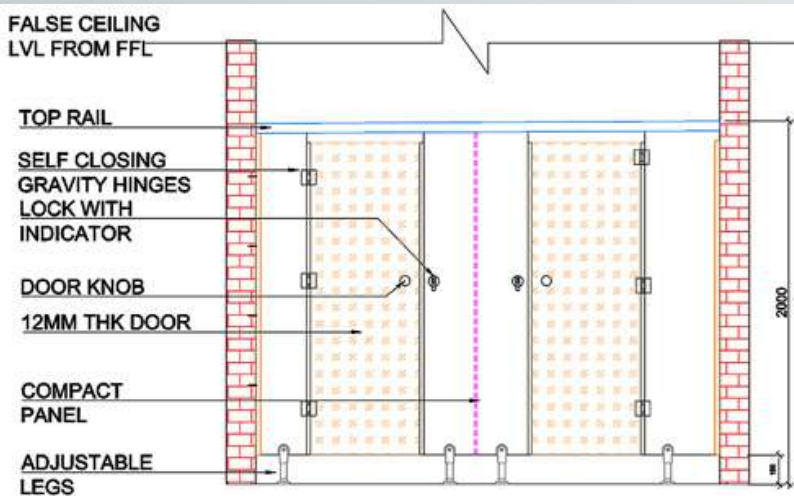
Designing a toilet cubicle with adjustable legs involves considering several specifications to ensure functionality, durability, and ease of installation. Pearl is unrivalled in durability at its price point and complemented by our exclusive range of high-quality polished aluminium section & hardware

Supply and installation of RESTLOO PEARL Restroom partitions Width 900-1200mm x Depth 1550-1800mm x Height 2000mm, (Height is including 150 mm gap from bottom) Door Width - 610mm

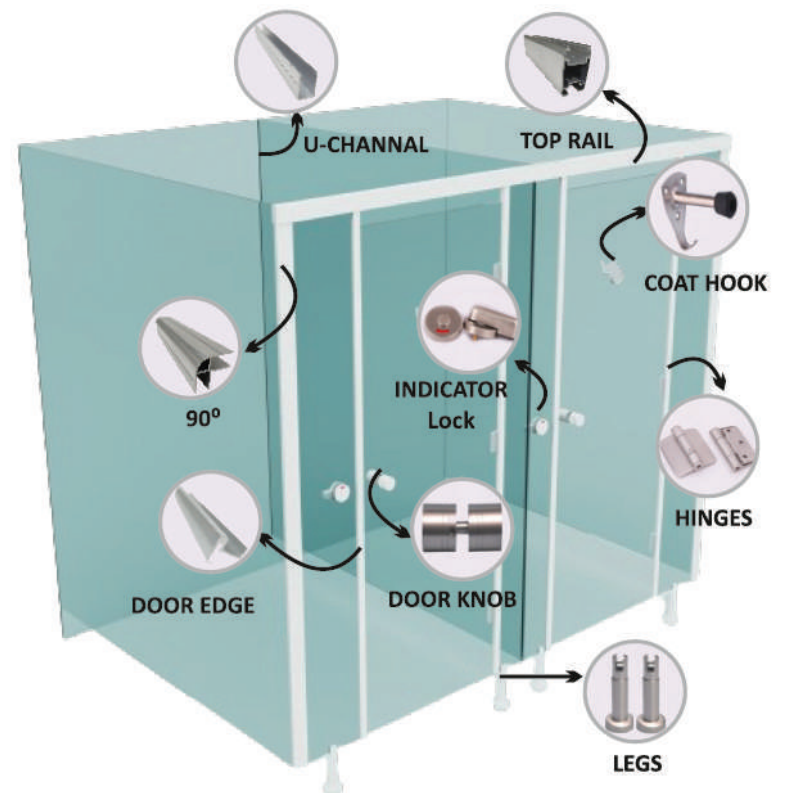
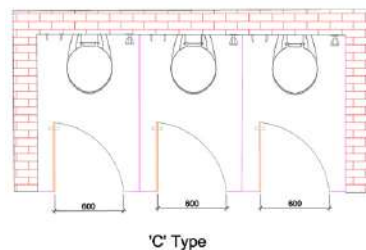
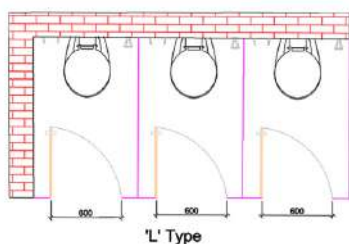
Offering the best value in the industry, our powder coated section & Nylon polyamide 6 address the key areas of durability, high recycled content, fire resistance and graffiti resistance. powder coated designs look fantastic.

Supply and installation of RESTLOO RUBY Restroom partitions Width 900-1200mm x Depth 1550-1800 mm x Height 2000 mm, (Height is including 150 mm gap from bottom) Door Width - 610 mm

RUBY



FRONT ELEVATION



GOLD



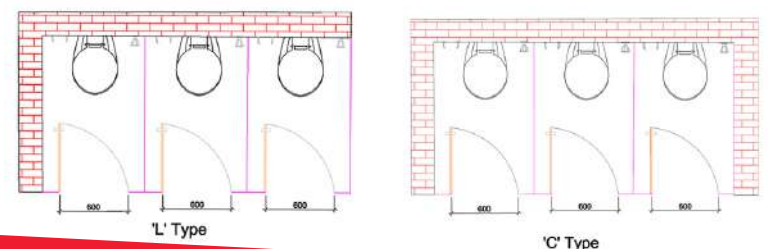
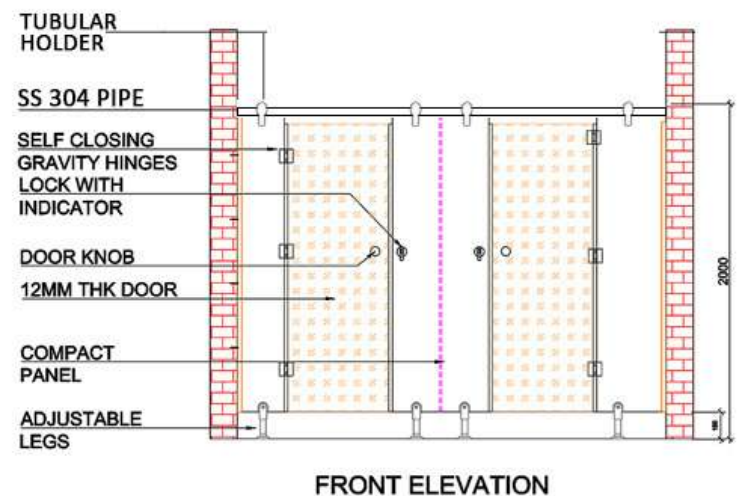
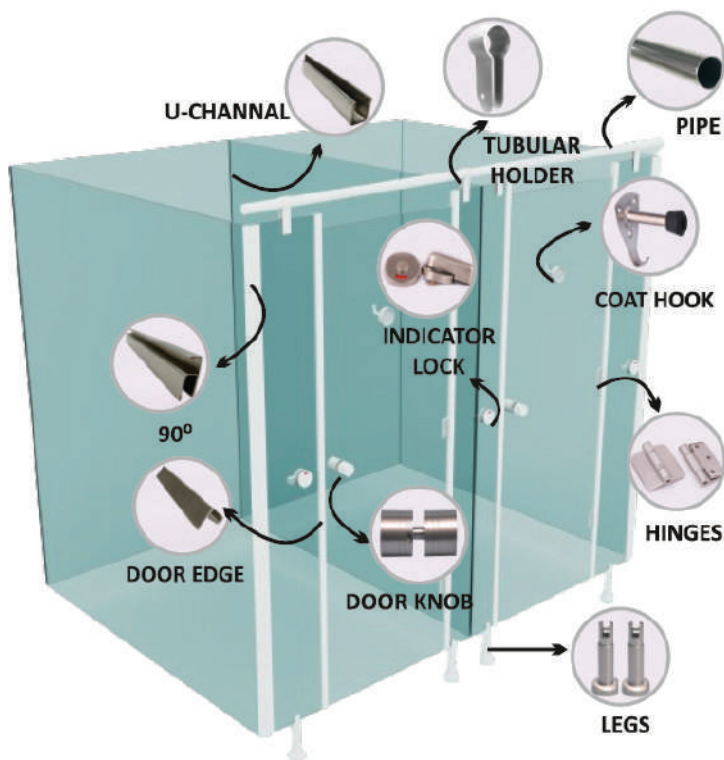
GOLD name stands for the highest perfection in cubicle construction. An outstanding design, high stability and absolute water resistance enable this cubicle system to be used in all areas. most demanding product with price friendly, looks reach, anti bacterial compact board with SS hardware & section.

RESTLOO GOLD Restroom partitions Width 900-1200mm x Depth 1550-1800 mm x Height 2000 mm, (Height is including 150 mm gap from bottom) Door Width - 610 mm

Washrooms will be closely scrutinised by all who use them and first impressions are vital, especially in public areas such as nightclubs, retail outlets and leisure facilities. The appearance of the restroom and its associated facilities can make or break a customer's opinion of the whole enterprise.

RESTLOO DIAMOND Restroom partitions Width 900-1200mm x Depth 1550-1800 mm x Height 2000 mm, (Height is including 150 mm gap from bottom) Door Width - 610 mm

DIAMOND



IMPERIAL



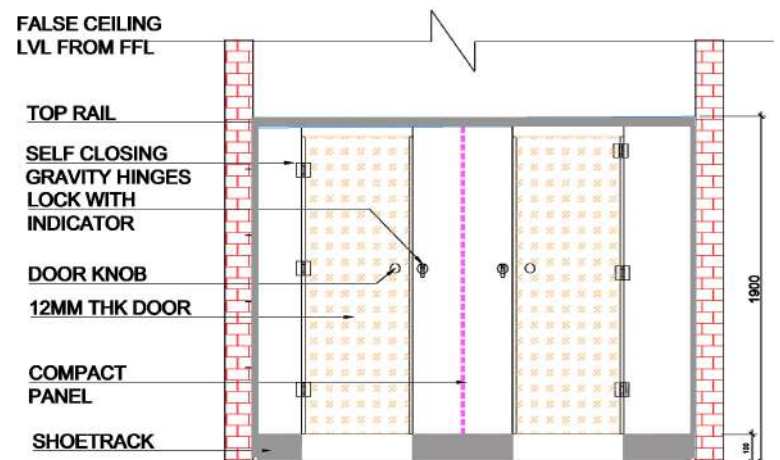
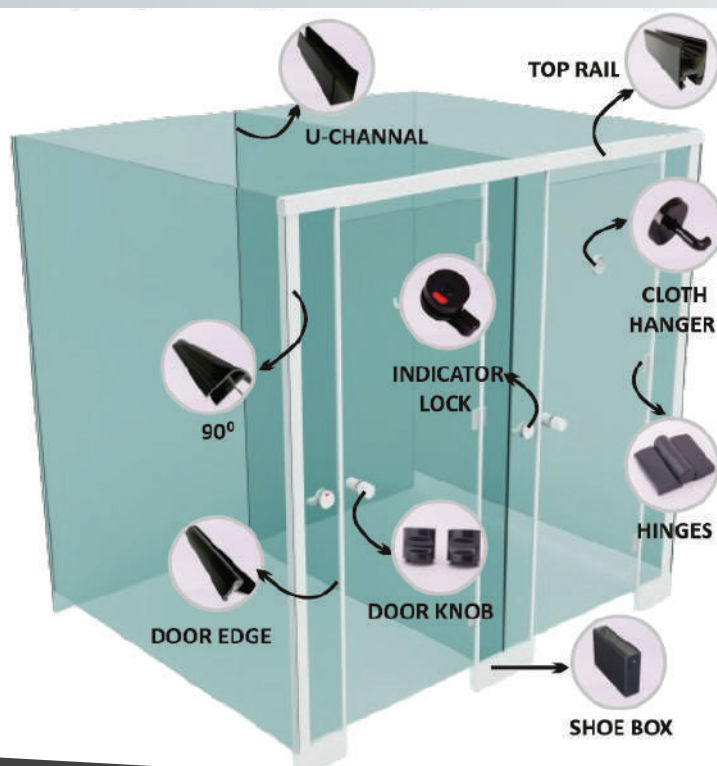
This economical and sturdy mounting style installs just about anywhere. An aluminium anti-grip head rail secures partitions firmly to the walls. Black Core Phenolic partitions sheets are fused at high temperature and pressure. In addition to strength and serviceability, a wide range of colors provide limitless design flexibility.

RESTLOO IMPERIAL Restroom partitions Width 900-1200mm x Depth 1550-1800 mm x Height 1900 mm, (Height is including 100 mm gap from bottom)
Door Width - 610 mm

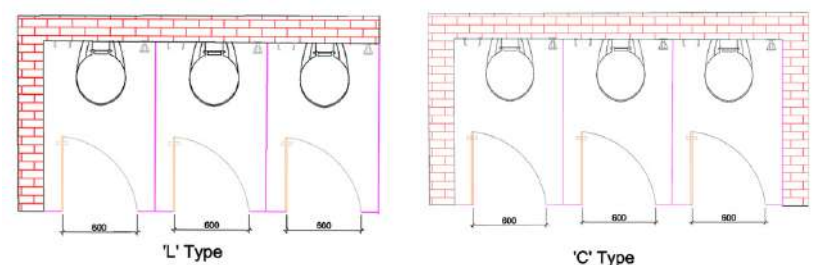
Restloo represents MARVEL which consists of NYLONE SHOETRACK with 2 different materials like aluminium and ss. We can provide commercial washrooms to exact specifications and budget. We also supply more economical commercial washrooms.

RESTLOO MARVEL Restroom partitions Width 900-1200mm x Depth 1550-1800 mm x Height 1900 mm, (Height is including 100 mm gap from bottom)
Door Width - 610 mm

MARVEL



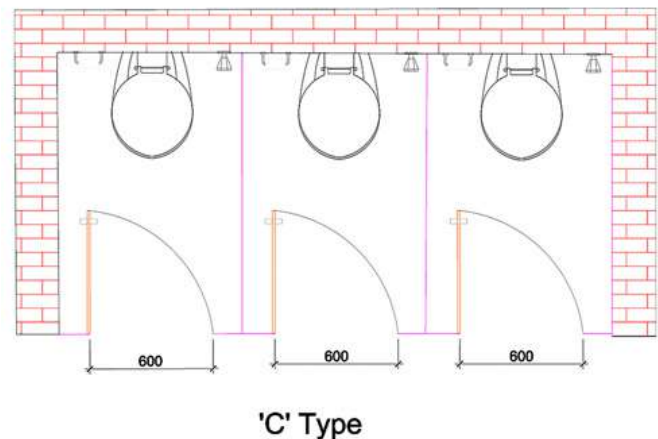
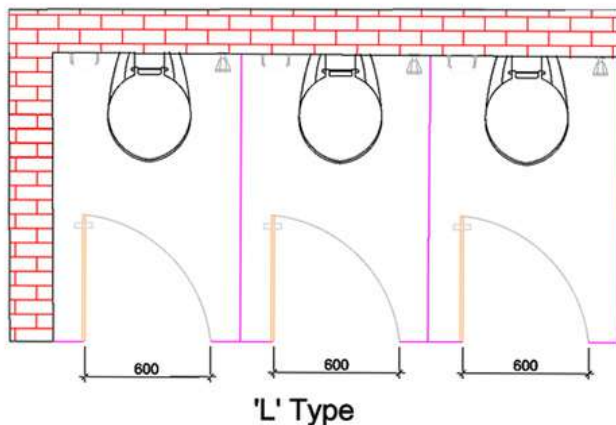
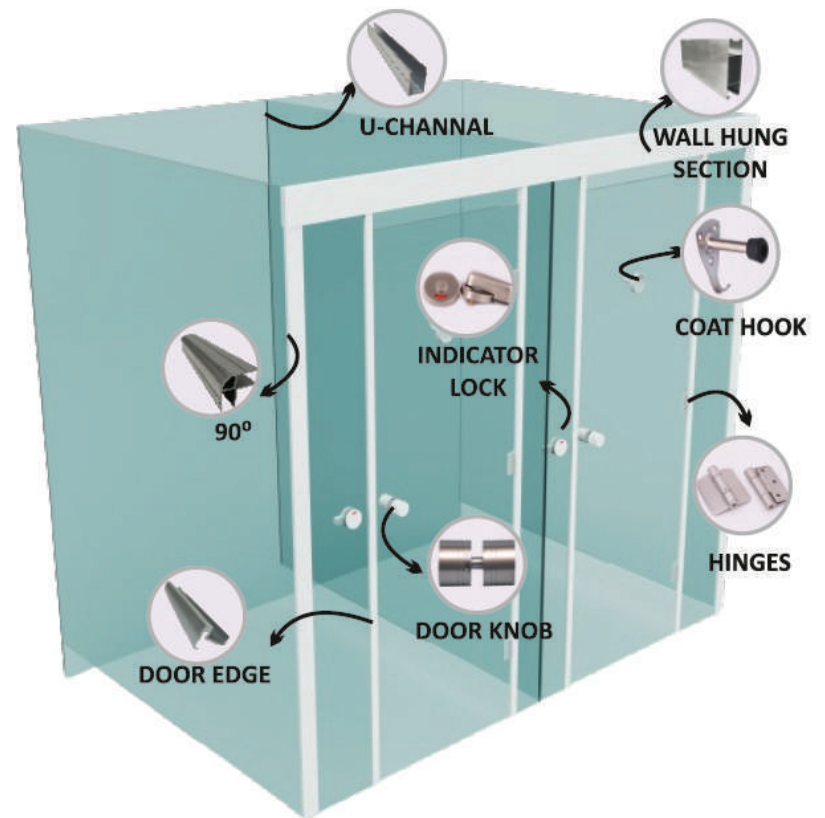
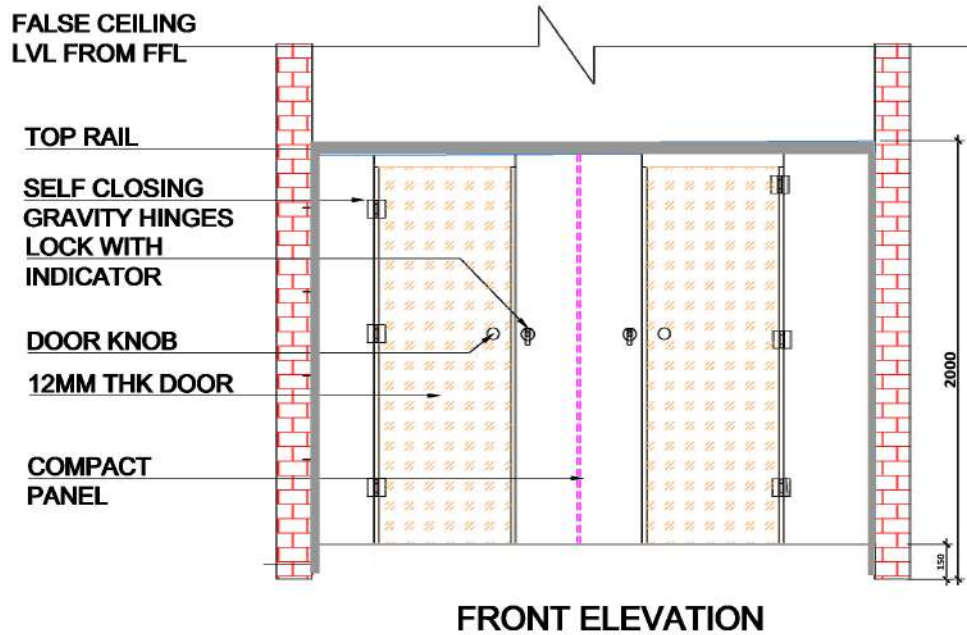
FRONT ELEVATION



WALL HUNG



Wall Hung is a popular wall hang overhead braced system. This is widely recommended by us to the client commercial area it's make toilet looks reacher, this is a widely used and economical toilet system Toilet or shower partitions in the Wall hung Cubicle System available in 12mm compact laminate. **RESTLOO WALL HUNG Restroom partitions.** Width 900-1200mm x Depth 1550-1800 mm x Height 2000 mm, (Height is including 150 mm gap from bottom) Door Width - 610 mm.

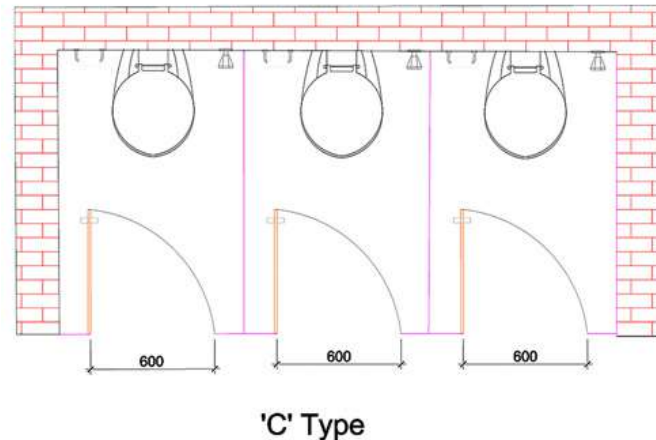
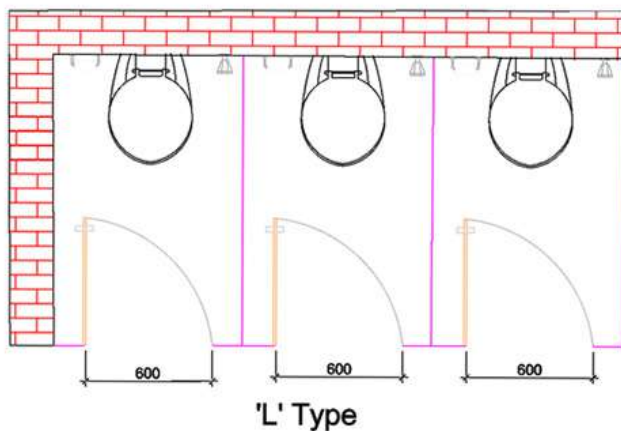
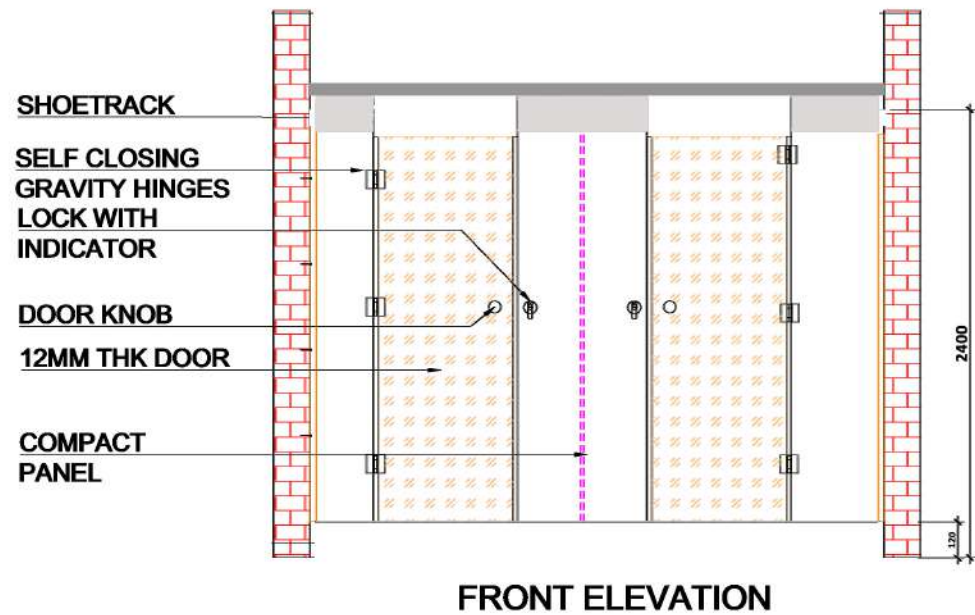


[IS -2046 CERTIFIED PRODUCT]

FLOAT

FLOAT series Hung from the ceiling, this amazing toilet cubicle system is a frame less system which offers unobstructed floor space for easy floor maintenance. Reach in looks, definately use in all Restroom's

Supply and installation of RESTLOO FLOAT Restroom partitions. Width 900-1200mm x Depth 1550-1800 mm x Height 2400mm,(Height is including 120 mm gap from bottom) Door Width - 610 mm

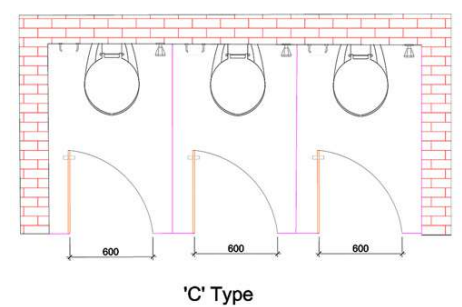
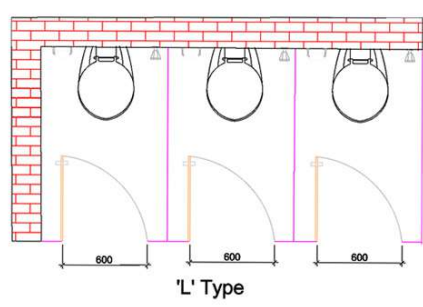
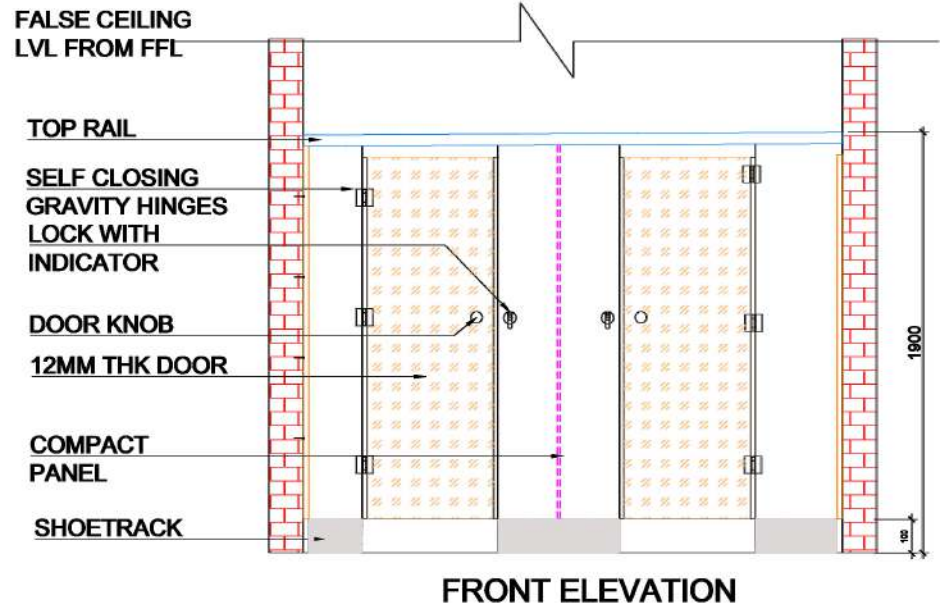
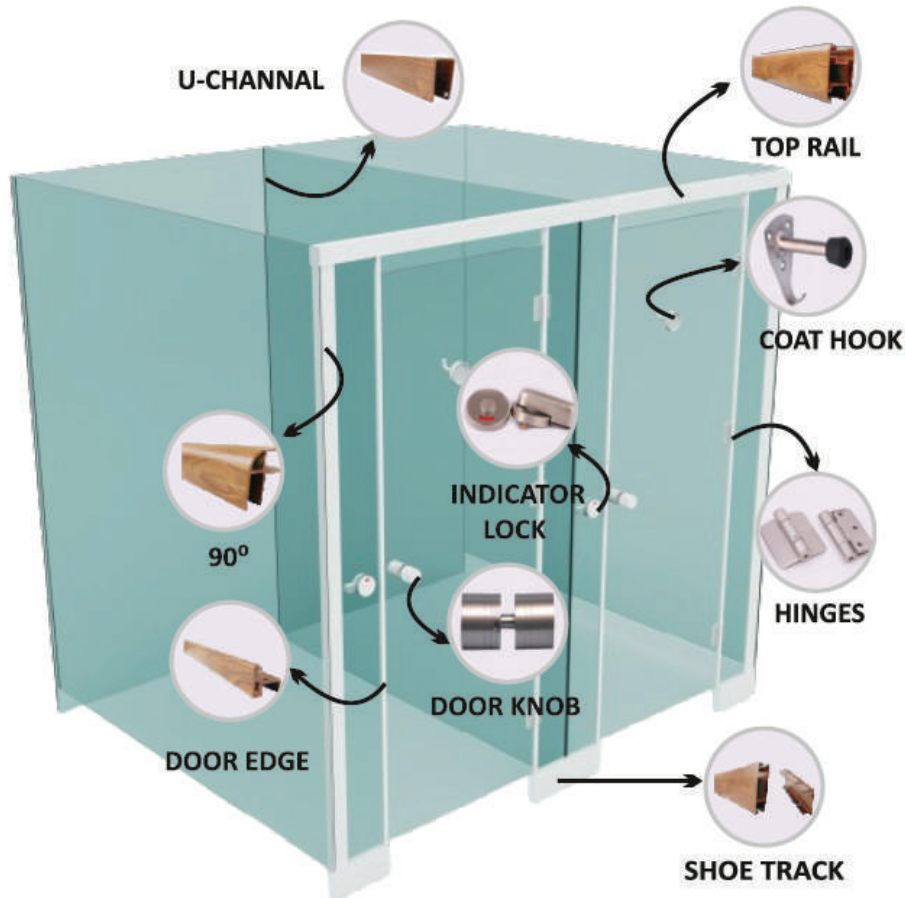


AROMA



Area to service a growing demand for aesthetically pleasing restroom partitions as an alternate to traditional stalls. Our company continues to introduce new and innovative design options. We develop AROMA toilet partition which consist of different wooden shade coating on aluminium section it's gives natural looks to your toilet area and it's marge with your partition colors too.

RESTLOO AROMA Restroom partitions Width 900-1200mm x Depth 1550-1800 mm x Height 1900 mm, (Height is including 100 mm gap from bottom) Door Width - 610 mm



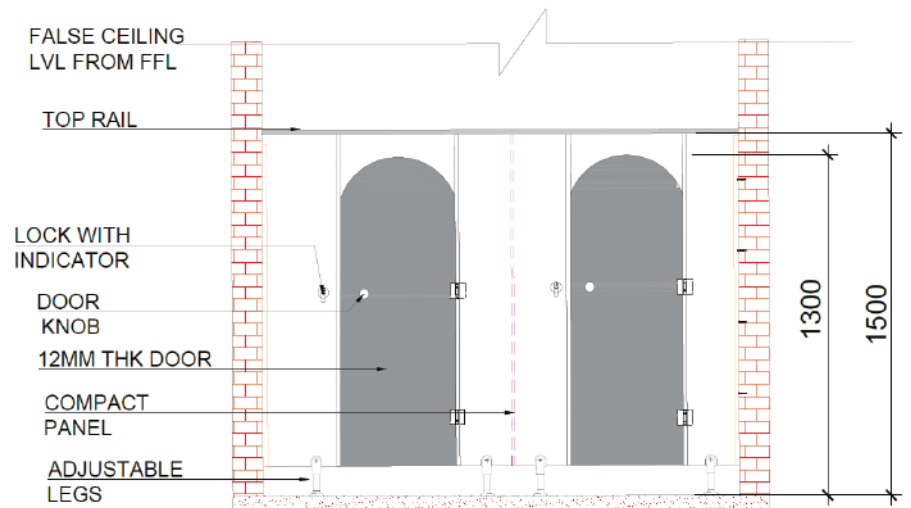
Art series perfect to express thoughts. Engraving can be added to the front or back doors, pilasters, panels & urinal screens. This accent can enhance a design, repeat a thematic element, convey a message, display a log, advertise and more. Engraving depth with a nominal thickness of 0.1mm to 1mm would typically be engraved to depth of 0.5mm Engraved show the color of the core material exposed by the Engraving.



KIDDO'S



RESTLOO KIDDO'S cubicle are fun, unique and safe. The curved doors and partitions make the washroom exciting. Discover our wide range of Children's Cubicles. Especially designed for security, modesty and hygiene, our range of children's toilet cubicles come in at a reasonable price and are the perfect solution for you HPL toilet partitions can meet the school requirement. 1. Environment friendly and safe 2. Beautiful and colorful 3. Special shape design 4. Easy to clean 5. No peculiar smell

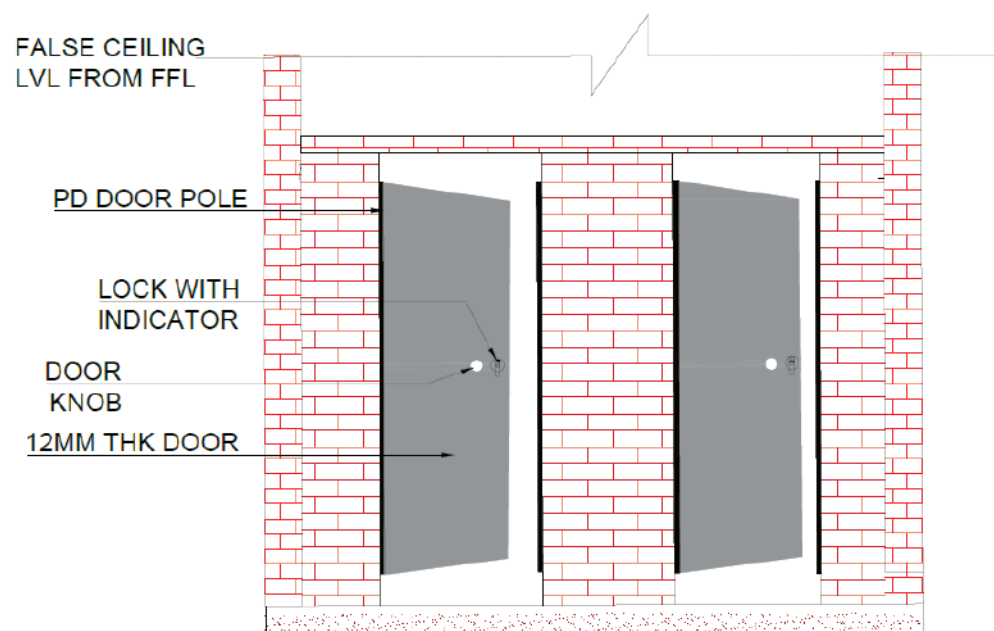
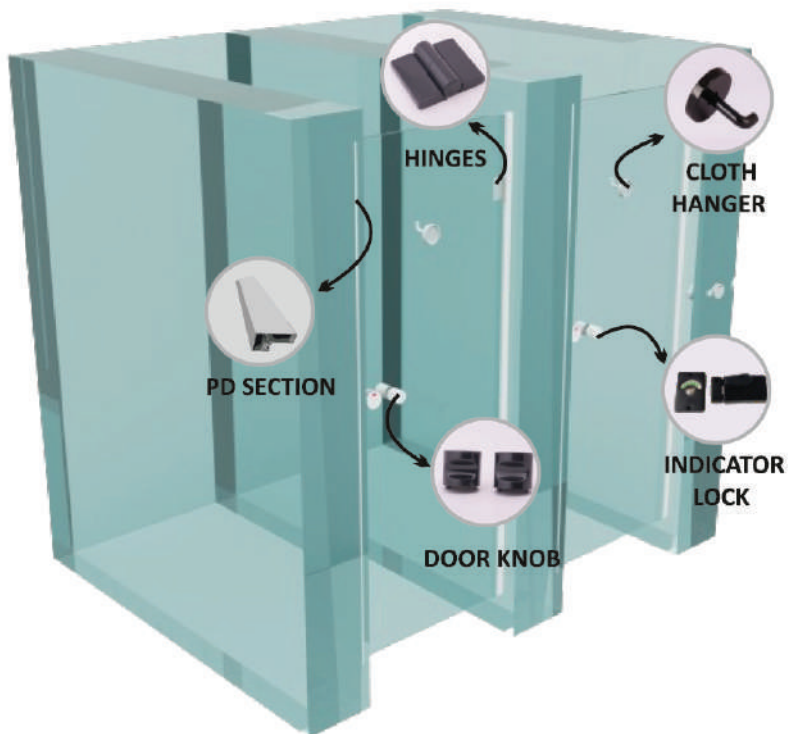


FRONT ELEVATION

PD (PARTITION DOOR)



Most of toilet area are covered with three side wall there we use our partition door call PD DOOR with there hardware lock, hinges and section, all PD doors are made with 12 mm HPL compact board.



FRONT ELEVATION

URINAL PARTITIONS

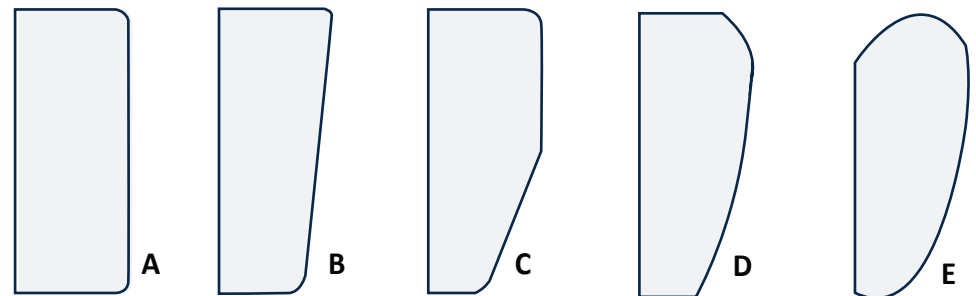
Indian standard urinal partitions or panels or modesty panels are made by marble / granite / and glass but these products are not a hygienically safe, antibacterial. If you are working with designer toilet partition so we offer same material product with different design URINAL PARTITION. HPL urinal divider, waterproof, easy to clean and maintenance free.



SPECIFICATION

Overall Height	900MM / 1200MM
Overall Width	400MM / 500 MM
Shape	Available Different shapes
Fittings	Anodised Aluminium U Channel
Fixings	All in 304 SS screw

DIFFRENT SHAPES OF URINAL PARTITIONS



PRIVACY PARTITIONS



When specifying privacy partitions for toilet cubicles or urinal partitions, it's important to the privacy partitions meet quality standards and are suitable for the intended restroom environment.

SPECIFICATION

Overall Height	1800MM / 2100MM
Overall Width	600MM / 1500 MM
Shape	Available Different shapes
Fittings	Anodised Aluminium U Section
Fixings	All in 304 SS screw

HIGH QUALITY NYLON HARDWARE

Nylon Hardware makes the partitions look sleek without the higher price point of other smooth materials.



Support Legs



Lock cum Indicator



Auto Hinges



Door stopper/Coat hook



Shoebox



Door Knob

HIGH QUALITY SS (STAINLESS STEEL) HARDWARES



Support Legs



Auto Hinges



Door stopper or Coat hook



Door Knob



Shoebox



Tubeholder



Lock cum Indicator

SECTIONS



Top Rail



F Channel



U Channel



90° section



U Channel



90° section



Door Edge Channel



U Channel



90° section



Top Rail



Wall Hung Section



Door Edge Channel



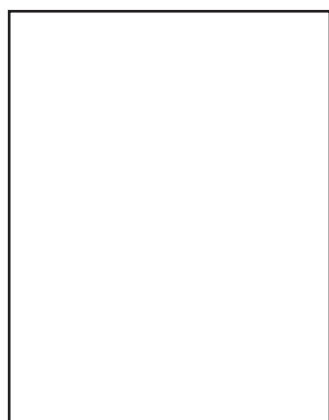
PD Section



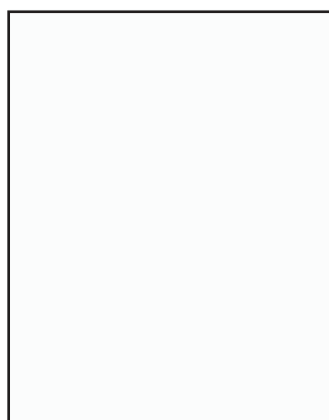
Top Rail

AVAILABLE COLOURS

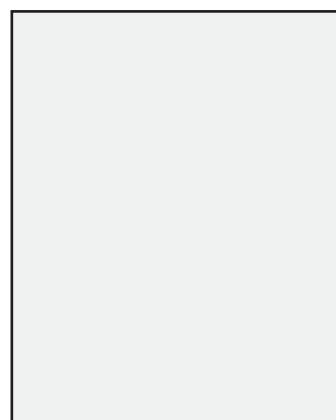
SOLID COLOUR



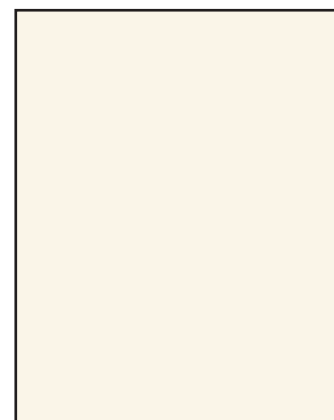
RL 101



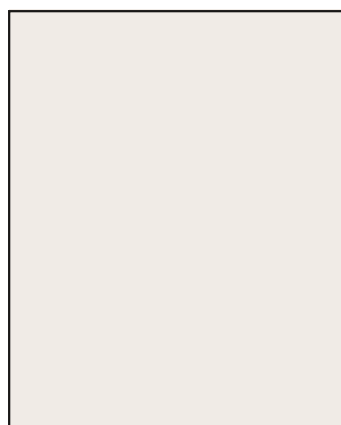
RL 104



RL 106



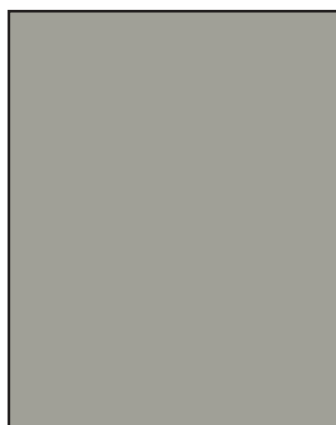
RL 108



RL 109



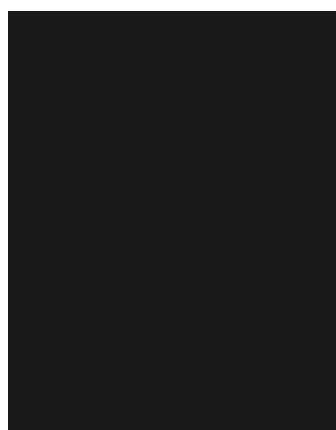
RL 111



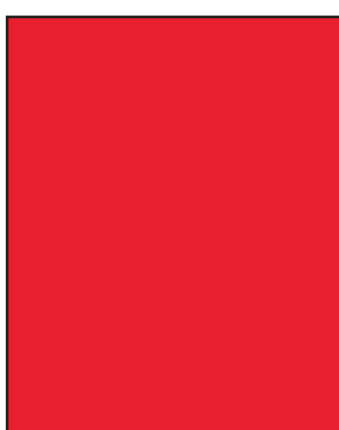
RL 112



RL 114



RL 115



RL 116



RL 117



RL 118

AVAILABLE COLOURS

WOODEN COLOUR



RL 123



RL 125



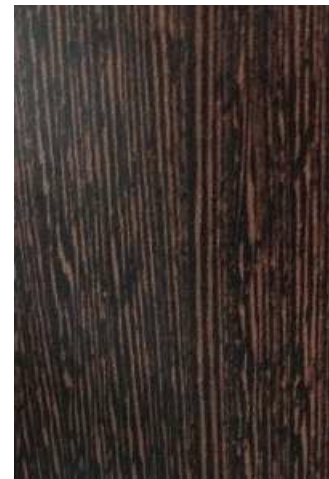
RL 127



RL 128



RL 129



RL 130



RL 135



RL 136



RL 137

Thank You



IS-2046 CERTIFIED PRODUCT

TOTAL SOLUTION FOR RESTROOM CUBICLE PARTITIONS

Restroom cubicle partitions, Toilet cubicle partitions, Washroom Partitions,
Urinal partitions, Bathroom partitions, Toilet modular partitions.

SHAKUNTAL INTERIOR

(ISO 9001:2015 CERTIFIED)

 **Head Office:** FA/11, Lake City Mall, Kapurbawdi, GB Road, Thane west- 400607.

Warehouse : Unit No.16, Samruddhi Bldg, Sagar Plaza Ind. Complex, Sativali Road,
Near Visava Hotel, Vasai east, Mumbai, Maharashtra- 401208.

 +91 93222 32178 | 89836 32178 | 91729 62269 | 98348 92190 | 77100 55522

 sales.chennai@restloo.com | sales.mumbai@restloo.com | ginish@restloo.com | admin@restloo.com

 www.restloo.com

OUR PRESENCE

Mumbai | Pune | Chennai | Bangalore | Hyderabad | Calcutta